



22135204



International Baccalaureate®  
Baccalauréat International  
Bachillerato Internacional

**GEOGRAPHY  
HIGHER LEVEL AND STANDARD LEVEL  
PAPER 2 – RESOURCES BOOKLET**

Wednesday 15 May 2013 (morning)

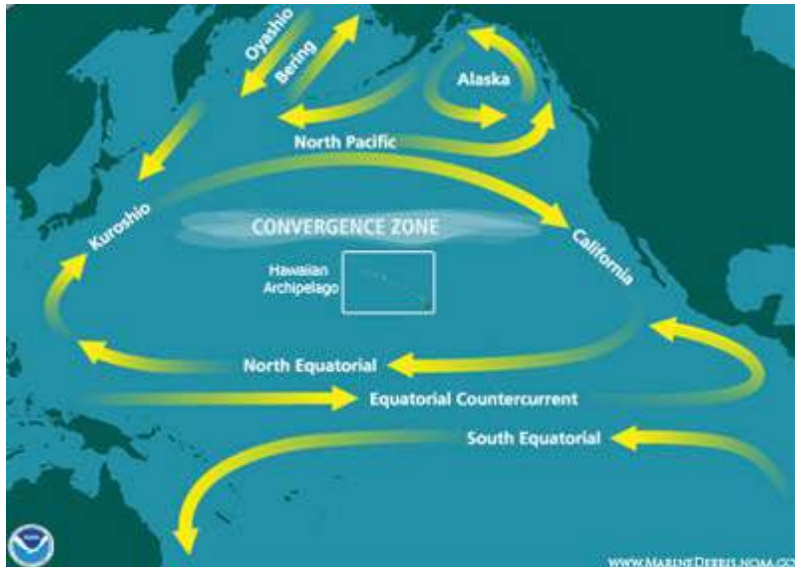
---

**INSTRUCTIONS TO CANDIDATES**

- Do not open this resources booklet until instructed to do so.
- Use the resources as appropriate to the questions in paper 2.

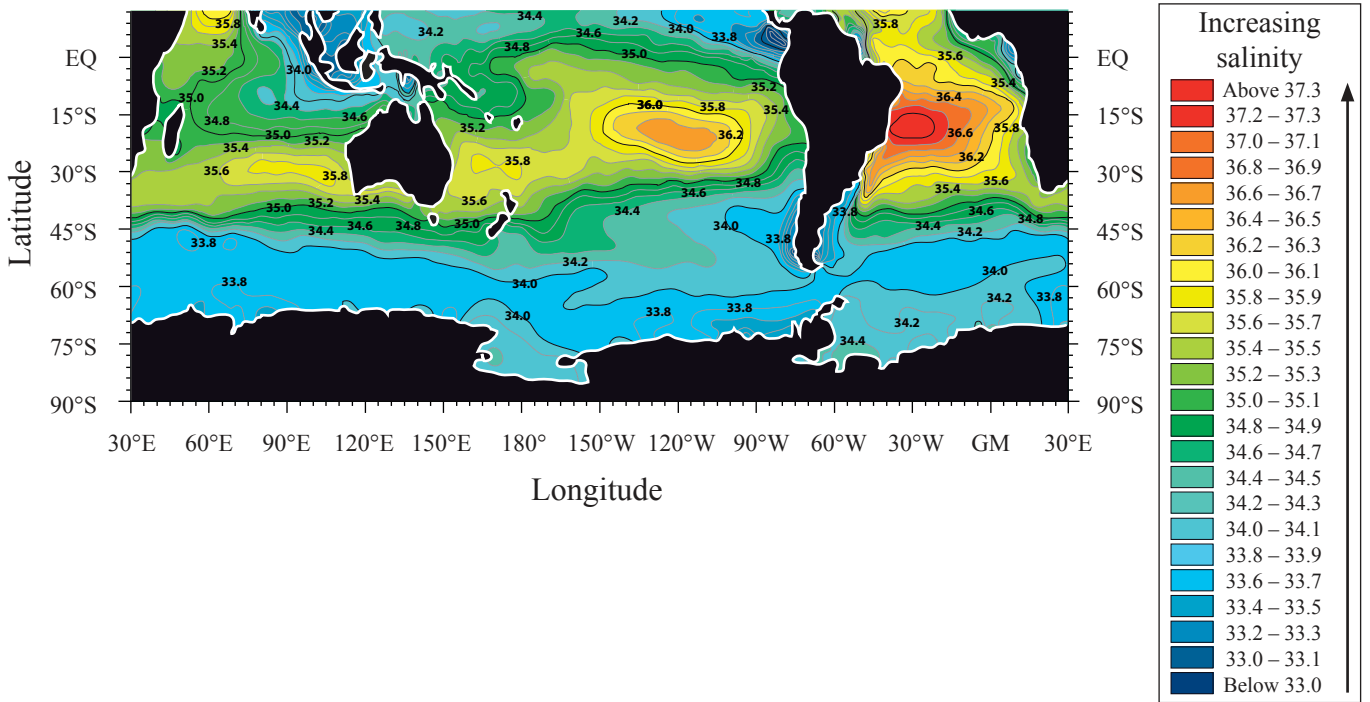
**Optional Theme B — Oceans and their coastal margins**

- 3. The diagram shows one interpretation of an area of marine pollution (commonly referred to as an oceanic “garbage patch”) and some ocean currents in the northern hemisphere.



[Source: From National Oceanic and Atmospheric Administration (NOAA) and the Department of Commerce. <http://marinedebris.noaa.gov/marinedebris101/images/STCZ.jpg>]

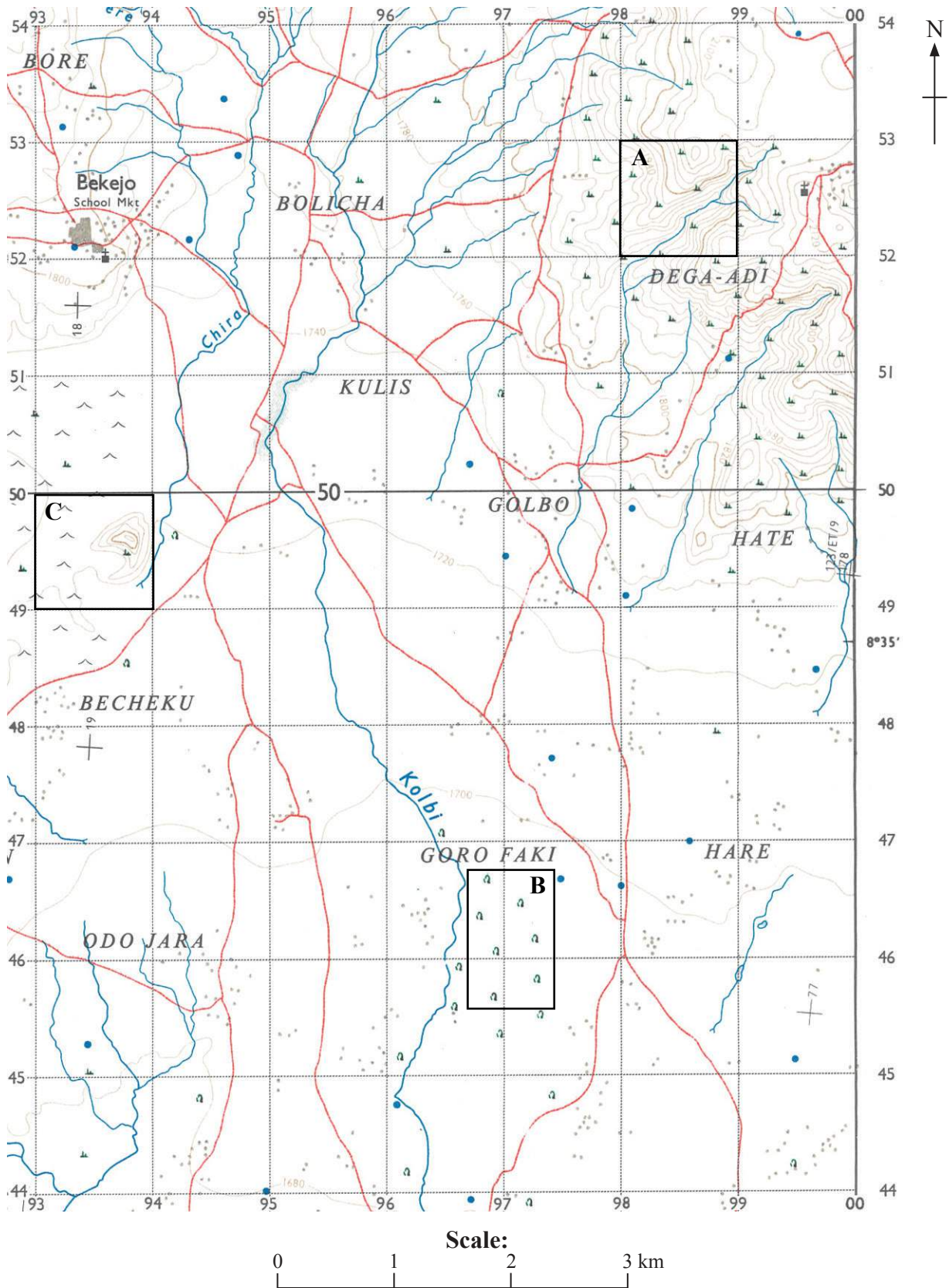
- 4. The map shows the surface salinity of the world's southern oceans (the numbers refer to the practical salinity scale (PSS)).



[Source: <http://serc.carleton.edu/eslabs/corals/4c.html>]

**Optional Theme C — Extreme environments**

5. The map extract shows the area around Bekejo in Ethiopia. The scale of the map is 1:50 000. The contour interval is 20 metres.



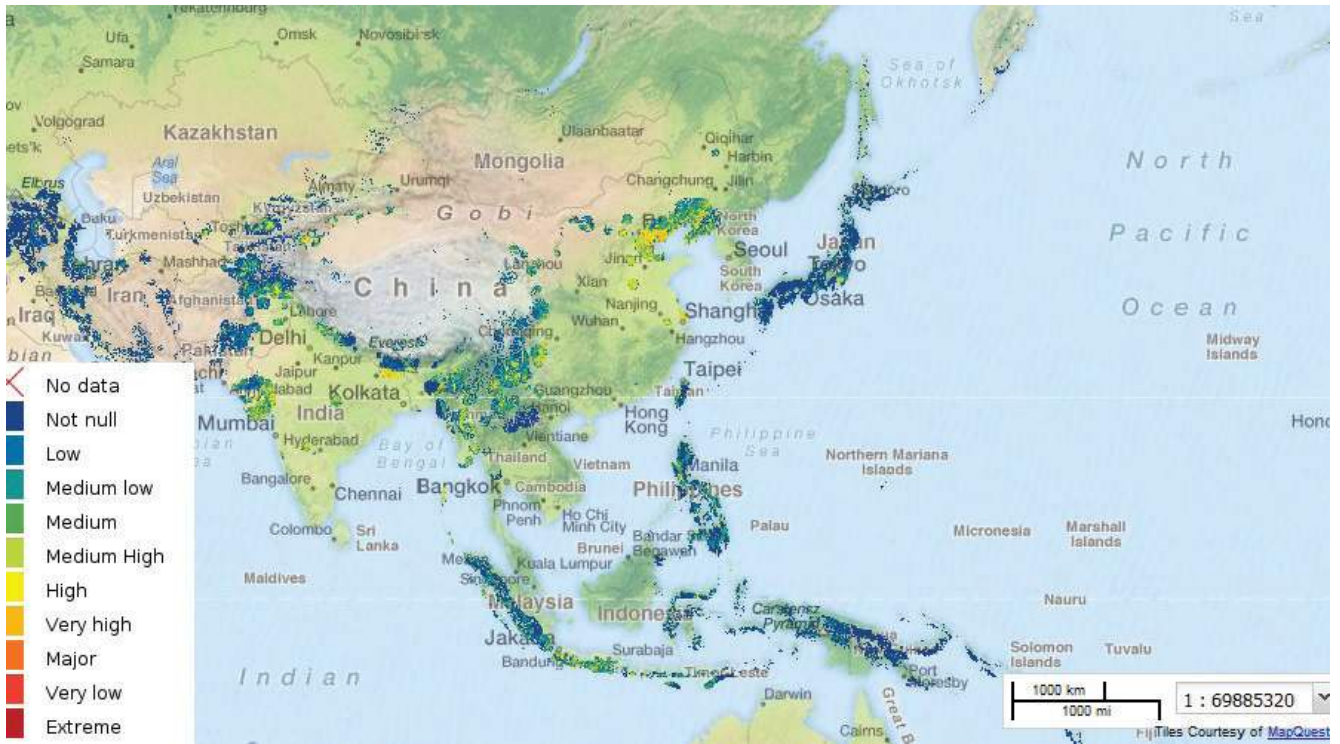
[Source: Ethiopian Mapping Agency, *Zikwala*, Series SMD 4, Sheet 0838 B4, Edition 1, 1975 (Reprinted 2008)]

**Key for map:**

Town or area with permanent buildings including public buildings		Boundary : International	
Tukul Settlement		• Kifle Hager	
Tukul or other small building		• Awraja	
Road : Asphalt Surface		• Wereda	
• Loose Surface		• National Park Reserve	
• Dry Weather, with Kilometre Stone		Trigonometrical Station : Primary, Secondary, Other	
Trail		International Boundary Pillar	
Cut Line		Spot Height (Surveyed)	
Railway, Station, Level Crossing		• • (Photogrammetric)	
• Light		Contours (Vt 20m)	
Airport		• Depression	
Airfield (Asphalt)		• Supplementary (Vt 10m)	
Airstrip (Grass)		Air Photo Principal Point with Film No	
Telegraph or Telephone Line		Watercourse, Waterfall, Rapids, Dam	
• " " " " along Road or Trail		• (Wide): Waterfall, Rapids	
Power Line		• disappearing, indefinite	
Antiquity, Ruin		Well, Spring, Waterhole, Water Tank	
Site of Battle, Mineral Working		Mill, Lighthouse	
Mosque, Church		School, Hospital or Clinic	
Forest		Cemetery : Christian, Moslem	
Thicket		Scattered Trees	
Bamboo		Palms	
Plantation (with appropriate abbreviation)		Swamp or Marsh	
Riverine Trees		Papyrus	
Eucalyptus		Area subject to inundation	
Woodland		Sand or Mud	
Scrub		Outcrop Rock	
		Lava	

**Optional Theme D — Hazards and disasters – risk assessment and response**

7. The map shows the population exposed to tectonic hazards in south and east Asia.



[Source: Adapted from OCHA Regional Office for Asia-Pacific, NGI Report 2007, 1600–1]